



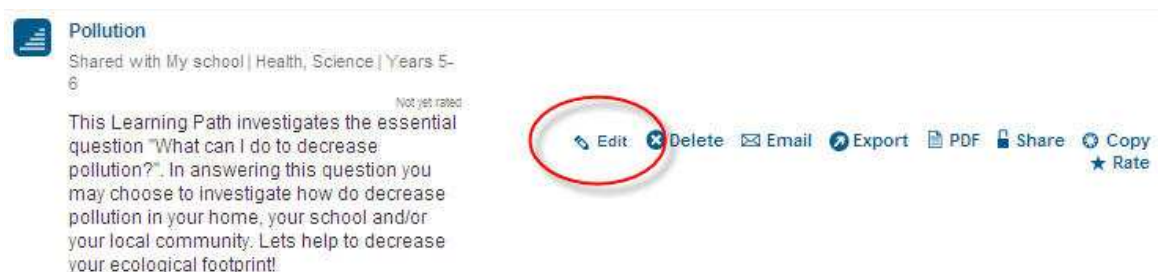
How to add a Scootle Learning Path to a myclasses page

A great place to store your Scootle Learning Paths is within myclasses. A property on a myclasses page can be used to store links to Learning Paths and more importantly scaffold the learning with text, images and video. This document will assist you in creating a myclasses property to store your Scootle Learning Paths

- 1) Once you have created your Learning Path (p.29 Scootle User Guide) it will be stored in your Learning Path folder(s), accessible via the Scootle box below:



- 2) Click the folder name which contains your learning Path. Once clicked you will see a list of all Learning Paths within that folder. Click “Edit” next to the Learning Path you have created.



- 3) On the edit screen you will see a URL (web link) which will link your students directly to your Learning Path without needing to enter in the PIN number. Highlight this URL, right click and Copy.

The screenshot shows the 'Edit learning path' interface. The URL field contains a link to the Scootle website. A right-click context menu is open over the URL, with the 'Copy' option highlighted. To the right, an 'Actions' sidebar lists various options like 'Edit details', 'Email', 'Export', 'PDF', 'Share', 'Convert to collaborative activity', and 'Delete'.

- 4) If you haven't created a class page already you should do so (see "Creating a Class Page" in myclasses help menu).

- 5) Click "Create a Property" from the Properties drop down menu in myclasses.

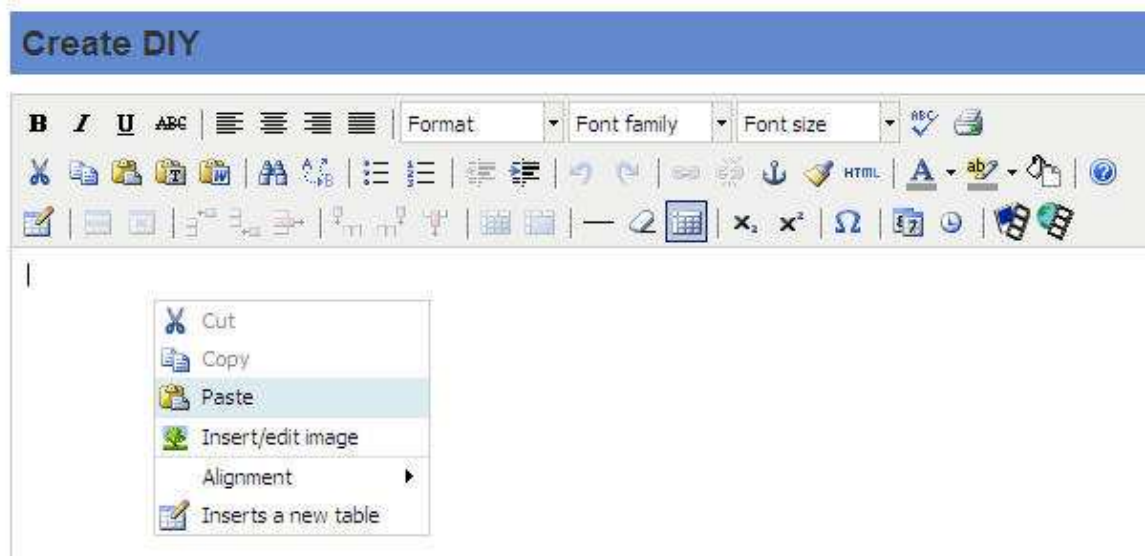


- 6) Create a DIY (Do It Yourself) property

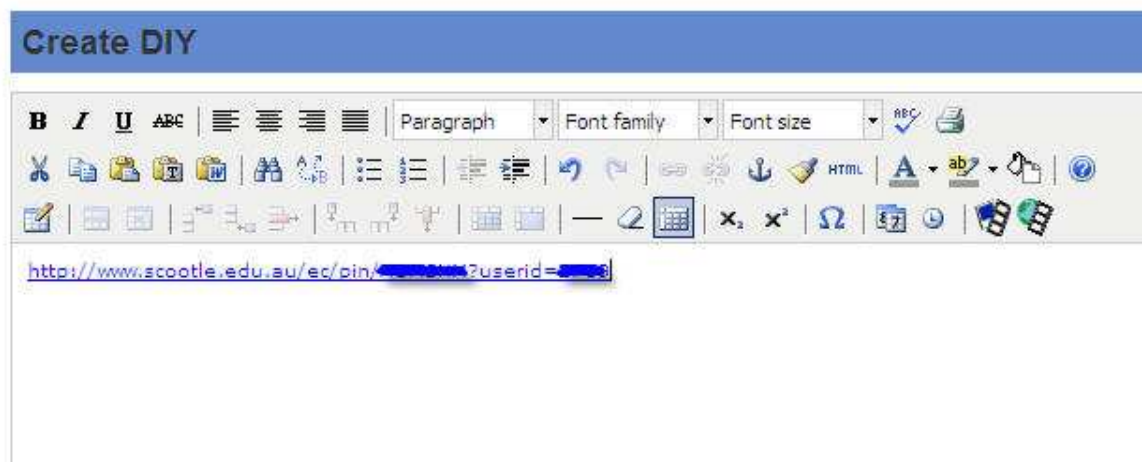
Choose a Property Type

Property Type	Property Description
<input type="radio"/> Bulletin Board	Read and post bulletins to a Bulletin Board.
<input type="radio"/> Class Page	Class Page.
<input type="radio"/> Discussion Room	Real-time discussion sessions.
<input checked="" type="radio"/> DIY	Create a static HTML area using the WYSIWYG editor (HTMLAREA)

- 7) Give the DIY a Title and Description and click “Next”.
- 8) Within the DIY right click and Paste the URL from your Scootle Learning Path.



- 9) The link will now display in the DIY.



- 10) Click Finish. Click “Add to Class”



- 11) Choose a class to add the DIY property to by ticking the box next to the class page you want to add it to. Click “Add”

<input checked="" type="checkbox"/>	Scootle	Scootle
-------------------------------------	-------------------------	---------

Add

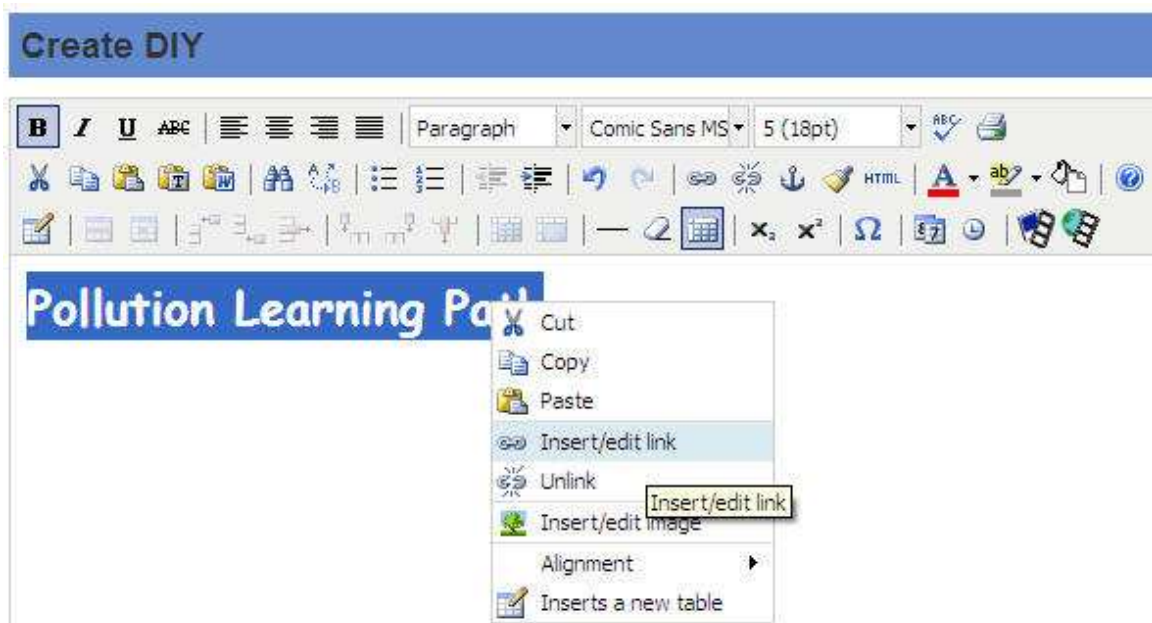
- 12) The DIY property containing the URL will now display in your myclasses page.



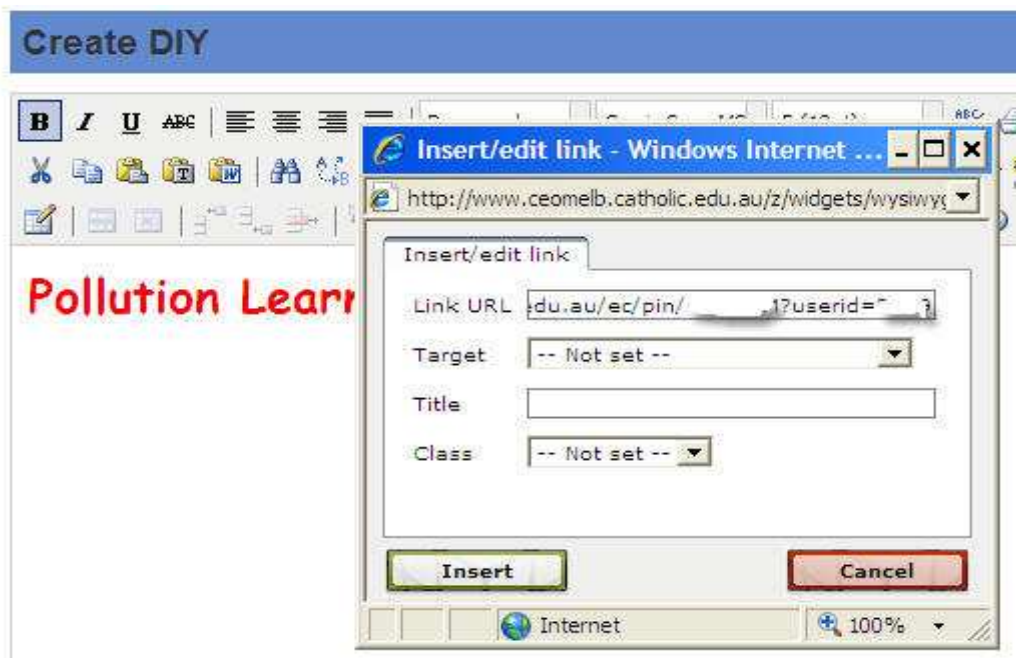
- 13) It is important that your students can identify what this link is for and what they need to do. You could choose to add text, images, or video to the DIY property to assist in scaffolding the students learning. Once you have mastered the above, try linking using the methods below.

Advanced Links

- 1) Rather than have a link as a confusing line of letters and number like above, you can insert the link into text.
- 2) First write a word(s) that describes your Learning Path. I chose “Pollution Learning Path”. Type this into the DIY (change font colour, size, style, bold, underline, italic etc as you see fit)
- 3) Highlight the text, right click and choose “Insert/edit link”.



- 4) Paste the URL from your Scootle Learning Path into the box titled “Link URL”.
Click the “Insert” button



- 5) Add text and images (see “How to use a DIY Property” in the myclasses help menu) to assist in scaffolding student learning. Below is an example (image is Creative Commons (no attribution required)).

Scootle

You are now in the Class Manage view. Use the options below to manage this class.

[Class View](#) [Delete](#) [Edit Class](#) [Email](#) [Add Property](#) [Close Class](#)

Learning Paths

This term we are investigating pollution.



Click the link below to go to a learning path where you will answer the question:

What can I do to decrease pollution?

[Pollution Learning Path](#)